

How to model the DONGHAE Co., Ltd.'s valve?

DH	ITEM	TYPE	PRESSURE	SIZE
		① ② ③ ④		

DH	DONG HAE	
ITEM		
KNIFE GATE VALVE - BONNETLESS		K
KNIFE GATE VALVE - BONNET	NON GLAND	KB
	GLAND	KBG
SOFT SEAT KNIFE GATE VALVE - BONNETLESS		SK
SOFT SEAT KNIFE GATE VALVE - BONNET	NON GLAND	SKB
	GLAND	SKBG
3-WAY VALVE	BALL	3B
	VANE	3V
	TUNNEL	3T
ADJUSTABLE ORIFICE VALVE		AO
INTAKE GATE VALVE	AIR	IR
	ASH	IH
SLIDE GATE VALVE	SASTING	SC
	PLAT	SP
SWING GATE VALVE		SW

TYPE			
1. STEM	NON RISING	N	
	RISING	R	
2. FLANGE	WAFERD	W	
	LUGGED	L	
	FLANGED	F	
3. SEAT	RUBBER	NBR	RN
		VITON	RV
		EPDM	RE
		PTFE	RP
	RTFE	RR	
	METAL	M	
4. OPERATING TYPE	LEVER	L	
	HANDLE	H	
	PNEUMATIC ACTUATOR	C	
	GEAR	G	
	ELECTRIC ACTUATOR	M	
	CHAIN	N	

SIZE							
ANSI				JIS (KS)			
2"	2	14"	14	50A	50	350A	350
3"	3	16"	16	80A	80	400A	400
4"	4	18"	18	100A	100	450A	450
5"	5	20"	20	125A	125	500A	500
6"	6	24"	24	150A	150	600A	600
8"	8	26"	26	200A	200	650A	650
10"	10	28"	28	250A	250	700A	700
12"	12	30"	30	300A	300	750A	750

PRESSURE		
JIS (KS)	10K	10
	20K	20
ANSI	150#	150
	300#	300

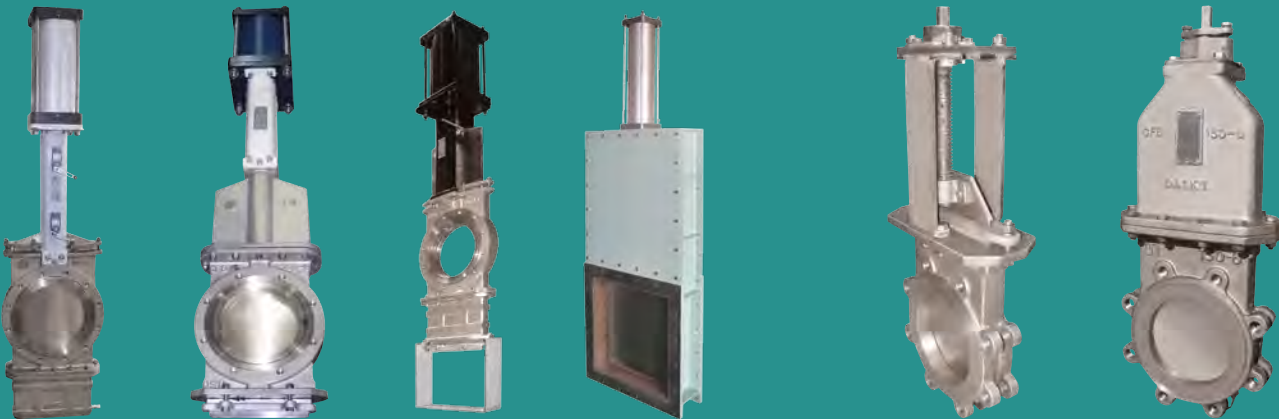
DONGHAE
METAL SEAT
KNIFE GATE VALVE



DONGHAE'S VALVE

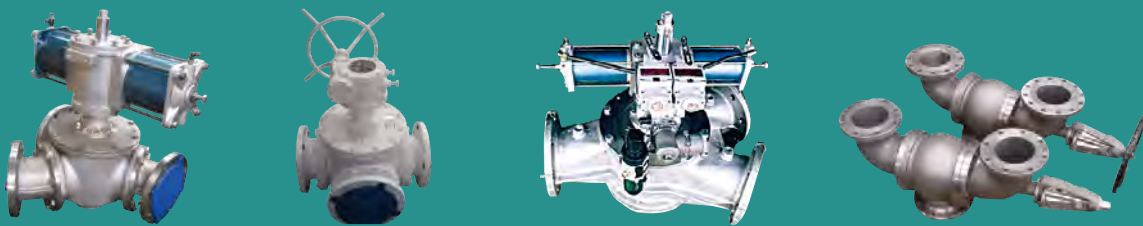


Knife Gate Valve

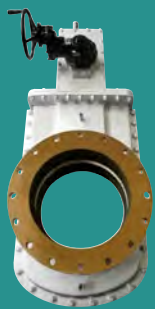


Slide Gate Valve

Knife Gate Valve (Sluice Type)



Diverter Valve



Orifice Valve



Ash/air intake Valve



Swing Gate Valve

