



**THERMOPLASTIC
VALVES INC.**
WAFER CHECK VALVE

SIZE: 1 -1/2" - 20"

DWN BY
CKP

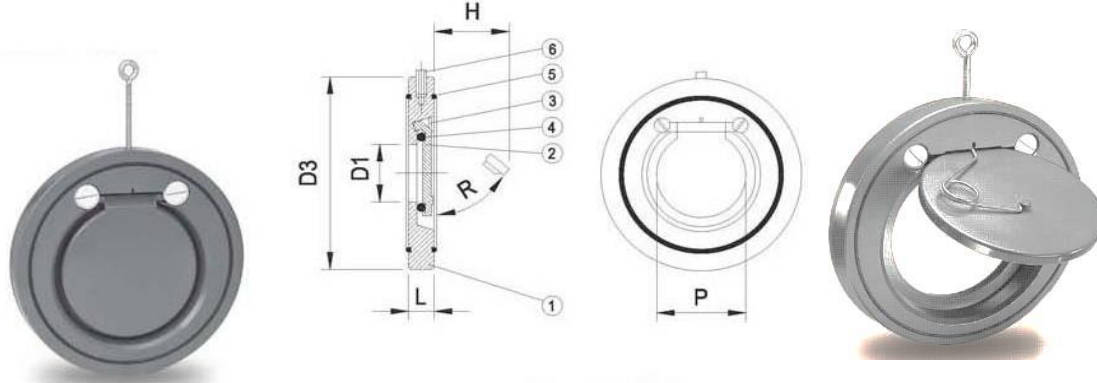
DATE
5-2012

DWG NO.
110-WCV

GENERAL DIMENSIONS

DATE _____ PER: _____

53 S. 7th Street, Emmaus, PA 18049
Ph: 610-967-6388 Fax: 610-967-6448
Email: tv2@fast.net
www.plasticvalves.com



Material Of Construction

Item	Part	Pcs	Materials	Item	Part	Pcs	Materials
1	Body	1	PVC, PP, CPVC, PVDF				
2	Flapper	1	PVC,PP,CPVC,PVDF				
3	Flapper Mounting Screw	1	PP	6	Installation Device	1	SS 316
4	O'Ring	1	Epdm, Viton®	7	Spring	1	SS 316

Ansi Dimensions

Nom. Size DN-Inch	D1	D3	P	L	H	R	Working Pressure (PSI)*	Required PSI to Open	Required Back Pressure
1 1/2"	0.89	3.76	1.38	0.63	0.99	68	145	0.1	1
2"	1.26	4.30	1.77	0.79	1.80	73	145	0.1	1
2 1/2"	1.57	5.12	2.36	0.79	2.00	75	145	0.1	1
3"	2.13	5.71	2.83	0.79	2.90	73	145	0.1	1
4"	2.76	6.45	3.54	0.87	3.60	72	145	0.1	1
5"	3.64	7.72	4.28	0.87	3.77	77	145	0.1	1
6"	4.4	8.66	5.19	1.02	5.80	73	145	0.1	1
8"	5.9	10.82	6.93	1.38	7.50	74	100	0.2	1
10"	7.48	12.99	8.74	1.57	9.00	70	87	0.2	1
12"	8.62	14.96	10.23	1.77	10.20	70	87	0.2	1
14"	10.47	16.93	12.24	1.93	9.65	70	45	0.3	1
16"	12.2	18.97	13.93	2.56	11.22	70	45	0.3	1
18"	13.78	21.1	15.59	2.67	13.00	70	30	0.3	1
20"	15.75	23.35	17.2	3.07	15.15	70	30	0.3	1

* Working Pressure for both PVC and CPVC Valves

Testing performed on PVC/EPDM valves at 73°F water temperature, non-shock.

Important Note: Wafer Checks are not full port valves. R = Disc angle in the open position

TVI WAFER CHECK VALVE

DESIGN ADVANTAGES

Vertical or Horizontal operation
Economic ~ Simple and durable construction
Compact ~ Requires little space in piping system
Easy Installation ~ Wafer body fits between standard ANSI flanges
(2 1/2" & 3" valves **require** spacers)
Body Construction ~ Light Weight, Chemical Resistant, Non-Corrosive

Available with 316 SS Spring Assist

APPLICATIONS

Water and Waste Treatment
Chemical Industry
Environmental Industry
Process Industry
Systems Engineering

Valve Size	Weight Per Valve	CV Value
1 1/2"	1 LB	26
2"	1 LB	58
2 1/2"	1 LB	77
3"	1 LB	105
4"	1 LB	224
5"	2 LB	399
6"	2 LB	718
8"	4 LB	980
10"	7 LB	1880
12"	11 LB	2520

DESIGN SPECIFICATIONS

BODY & FLAPPER

PVC, ASTM D-1784
PP, ASTM D-4101
PVDF, ASTM D-3222

FLAPPER MOUNTING SCREW

PP, ASTM D-4101

SEALS (o'rings)

EPDM, Ethylene Propylene Diene Monomer
Flourocarbon, Viton® (Dupont Dow Elastomers)

INSTALLATION DEVICE

316 Stainless Steel

CONNECTION

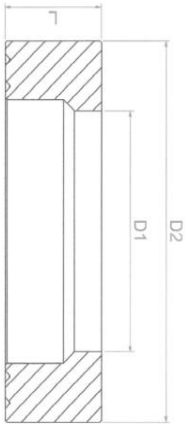
Wafer style to fit between ANSI B16.5 Class 150 Flanges

OPTIONS

316 SS Spring Assist
Spacer

TVI THERMOPLASTIC VALVES INC.		
PVC SPACER FOR WAFER CHECK VALVE		
SIZE: 1 -1/2" - 12"		
DWN BY CKP	DATE 5-2012	DWG NO. 110-WCV/SP
GENERAL DIMENSIONS		

PVC SPACERS For TVI's WAFER CHECK VALVE



Ansi Dimensions			
Nom. Size DN-Inch	L	D1	D2
1 1/2"	0.86	2.12	3.22
2"	1.04	2.51	3.97
2 1/2"	1.50	3.03	4.68
3"	1.90	3.46	4.07
4"	2.20	4.25	6.08
5"	2.75	5.27	7.36
6"	3.36	6.29	8.26
8"	3.36	8.14	10.43
10"	5.27	9.76	12.79
12"	5.58	11.96	14.64

*2 ½" thru 3" Valves **require** a spacer to prevent the flapper from interfering with the pipe.
 TVI also recommends installing a spacer for the all the sizes to ensure the valve flapper has 100% clearance.