



THERMOPLASTIC VALVES INC.

**ARRANGEMENT DRAWING
COMPACT BALL VALVE**

SIZE: 1/2" - 4"

**DWN BY
CKP**

**DATE
1-96**

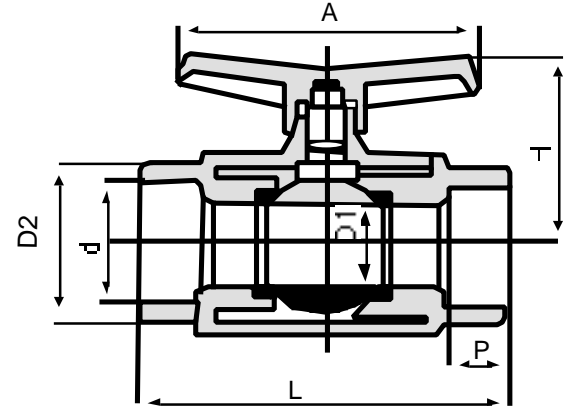
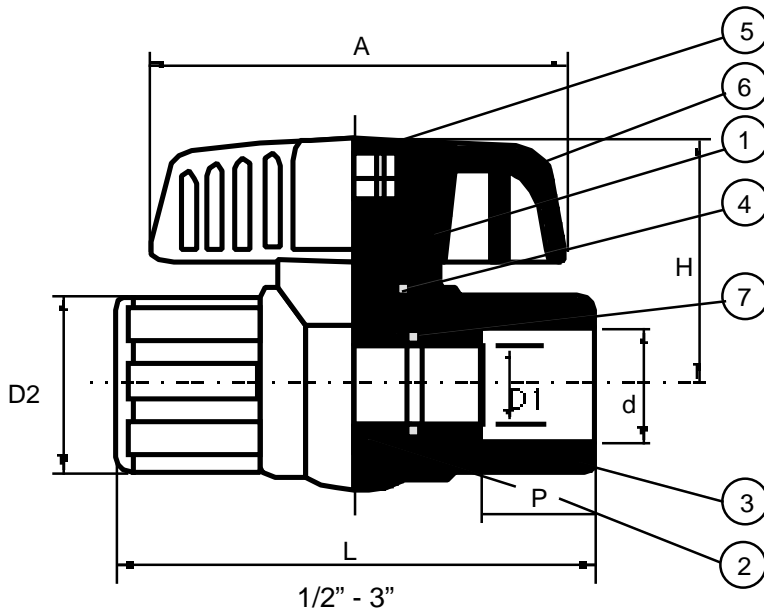
**DWG NO.
103-CB**

53 S. 7th Street, Emmaus, PA 18049
Ph: 610-967-6388 Fax: 610-967-6448

Email: tv2@fast.net
www.plasticvalves.com

CERTIFIED

CORRECT FOR GENERAL DIMENSIONS Date _____ Per: _____



4" only

Materials of Construction

Item	Parts	Pcs	Materials	Item	Parts	Pcs	Materials
1	Stem	1	PVC, CPVC	5	Cap	1	ABS
2	Ball	1	PVC, CPVC	6	Handle	1	ABS
3	Body	1	PVC, CPVC	7	Seat	2	EPDM, TEFLON®, VITON®
4	Stem O-Ring	1	EPDM, VITON®				

TEFLON® is a trademark of DuPont Performance Elastomers

*CPVC available up to 2"

Ansi Dimensions

Size Inch	D ₁	Socket	d	Thread	P	L	D ₂	H	A	Body Test Press PSI
1/2"	0.591	0.840		NPT 1/2"	0.875	3.110	1.378	1.820	2.756	222
3/4"	0.787	1.050		NPT 3/4"	1.000	3.543	1.575	2.244	3.031	222
1"	0.984	1.315		NPT 1"	1.125	4.134	1.890	2.402	3.504	222
1 1/4"	1.260	1.660		NPT 1 1/4"	1.250	4.764	2.126	2.598	3.504	222
1 1/2"	1.535	1.900		NPT 1 1/2"	1.375	5.000	2.441	2.913	4.370	222
2"	1.969	2.375		NPT 2"	1.500	5.866	2.953	3.150	5.472	222
2 1/2"	1.969	2.875		NPT 2 1/2"	1.750	7.638	3.622	4.213	6.378	222
3"	2.559	3.500		NPT 3"	1.875	9.173	4.409	5.512	7.480	148
4"	3.071	4.500		NPT 4"	2.250	9.606	5.236	6.575	9.055	148

Testing Procedure: Every valve is tested for bubble tight shutoff prior to leaving the factory.

Pressure testing performed on PVC/EPDM valves at 73° water temperature, non-shock.

TVI COMPACT BALL VALVES (1/2" - 4")

DESIGN SPECIFICATIONS

Thermoplastic ball valves 1/2" - 4" shall be compact type and have a one piece molded body with socket or threaded end connections. Seats shall be EPDM. Every valve is fully pressure and cycle tested to insure a quality molded in place finished product. Valves have a one piece self centering ball and stem design for leak tight operation. Materials of construction shall be as follows: (select as required for service)

BODY

PVC, CPVC, ASTM D-1784

BALL & STEM

PVC, CPVC, ASTM D-1784

SEATS

EPDM, Ethylene Propylene Diene Monomer
Fluorocarbon - VITON® (Dupont Dow Elastomers)

SEALS

EPDM, Ethylene propylene Diene Monomer
Fluorocarbon - VITON® (Dupont Dow Elastomers)

MANUAL LEVER

ABS D-1788

End connectors shall conform to the following standards:

SOCKET

ASTM - D-2467 (PVC, SCH-80)
ASTM - F-439 (CPVC, SCH-80)

THREADED

ASTM - D-2464 (PCP, SCH-80)
ASTM - F-439 (CPVC, SCH-80)

Not recommended for compressed air or gas service.